

The screenshot shows the Genscape Power website interface. At the top, there is a navigation menu with links for REGIONS, REPORTS, SETTINGS, WEATHER, and HELP. The main content area is divided into a left sidebar and a right map area. The sidebar contains the Genscape Power logo, a 'National' section, and a table of plant details for Oswego. Below the table is an 'ALERTS' section with a list of recent reports and a 'NOTES' section. The map area shows a map of the United States with various power plant locations marked by colored dots and icons. A yellow callout box points to a specific location on the map.

**GENSCAPE POWER**

### National

Temperature Map  Show  Hide

Name:	Oswego
Owner:	NRG Energy, Inc.
Type:	Oil
City:	Oswego
State:	NY
NERC ID:	2594
Last Updated:	10/25/06 15:00
Output (MW):	-20
Capacity (MW):	1804

#### ALERTS

10/25/06 14:52: [J M Stuart](#) reported:  
Custom Alert: Output rose 5 MW over 12 hours

10/25/06 14:50: [Clinch River](#) reported:  
Custom Alert: Output fell 5 MW over 12 hours

10/25/06 14:50: [Clinch River](#) reported:  
Custom Alert: Output fell 5 MW over 12 hours

10/25/06 14:46: [J M Stuart](#) reported:  
Custom Alert: Output rose 5 MW over 12 hours

10/25/06 14:17: [J M Stuart](#) reported:  
Custom Alert: Output rose 5 MW over 12 hours

10/25/06 13:58: [Independence](#) reported:

#### NOTES

All contents and information copyright Genscape, Inc. 2002-2005© U.S. Patent Nos. 6,714,000; 6,771,058; 6,956,764 patents pending.  
Map Images derived from maps copyright 2001, Map Resources, Lambertville, NJ 08530 www.mapresources.com

**GENSCAPE SERVES TWO CONTINENTS WITH THE BEST AND ONLY REAL-TIME POWER INFORMATION ON THE MARKET.**

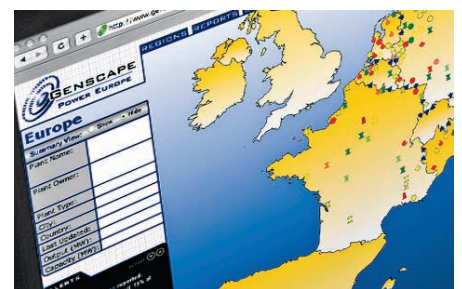
# BREAKTHROUGH TECHNOLOGIES

WE ARE EXPANDING INTO NEW SECTORS WITH OUR NEW ACQUISITION, GENSCAPE.

Genscape was founded in 1999 to serve the energy market's need for better information. Genscape introduced its power monitoring technology in 2001, with the company's network developing rapidly since then to cover more than 400 power plants and power transmission pathways across the US and continental Europe.

While continuing to grow the power monitoring networks, the company's recent expansion plans have included the development of monitoring technologies for additional energy markets such as natural gas and oil, and the creation of a publications division which provides important fundamental information for energy-related markets such as coal, emissions and natural gas.

In addition to extending its reach into new energy commodities and products, Genscape is also aggressively approaching new market opportunities in Japan, Australia and South America.



ONCE PROVEN, GENSCAPE'S MONITORING TECHNOLOGY CAN BE INSTALLED IN NEW MARKETS AROUND THE GLOBE. IN 2006, GENSCAPE ADDED COVERAGE IN ITALY AND THE CZECH REPUBLIC AND LOOKS TO EXPAND INTO SPAIN AND JAPAN IN 2007.



GENSCAPE'S CORE DATA CAN BE USED TO DEVELOP PRODUCTS FOR ADDITIONAL ENERGY MARKETS, SUCH AS NATURAL GAS, COAL AND EMISSIONS.

## 90 SECS

GENSCAPE CAN SEND POWER ALERTS TO SUBSCRIBERS' DESKTOPS WITHIN 90 SECONDS.